



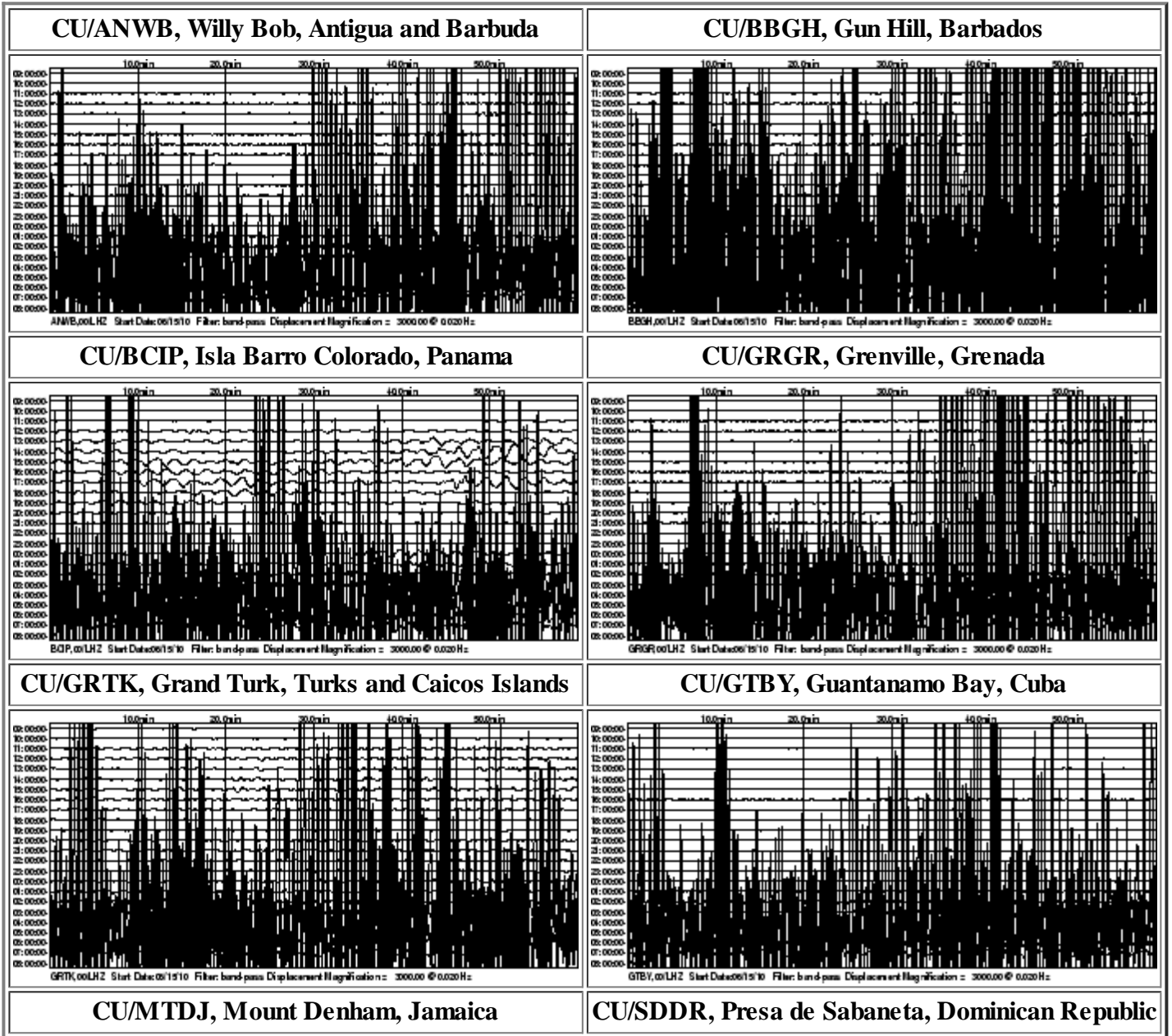
# Live Internet Seismic Server

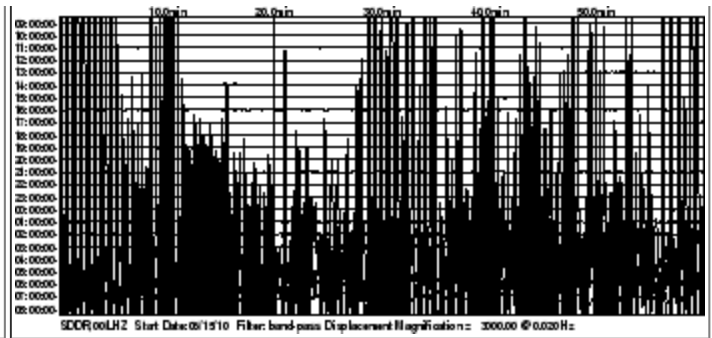
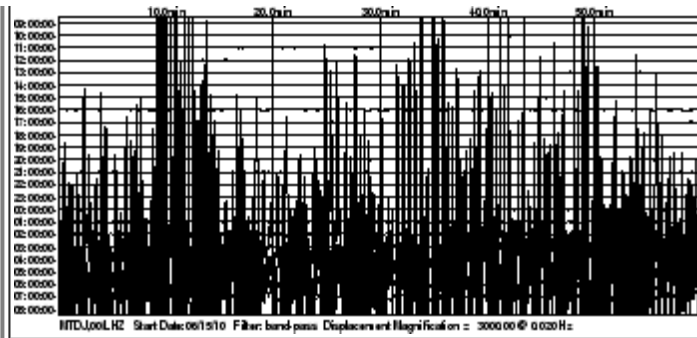
These data update automatically every 30 minutes!!

Last Update Wed Jun 16 01:50:45 MDT 2010

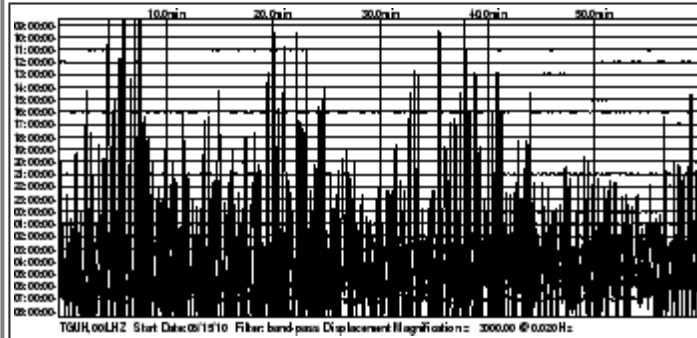
Seismograms may take several moments to load.

Click on a plot to see an expanded view.

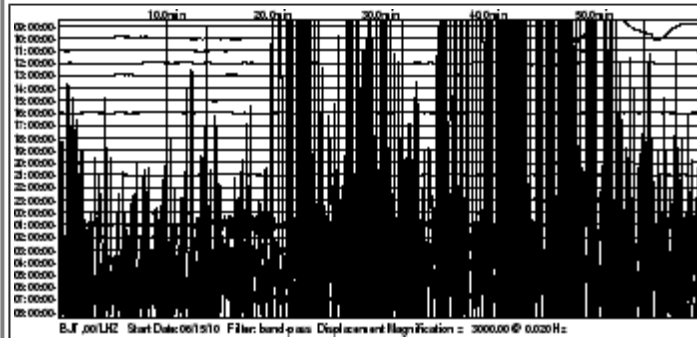




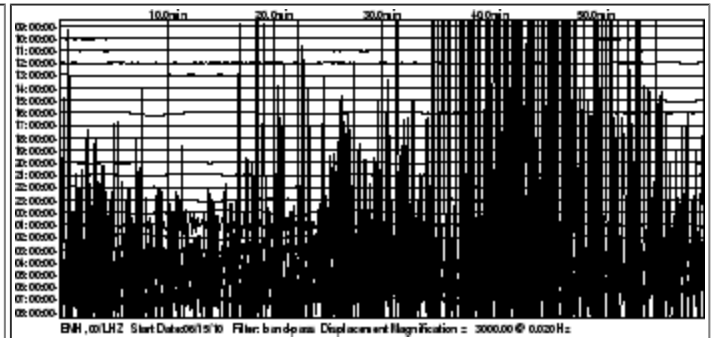
**CU/TGUH, Tegucigalpa, Honduras**



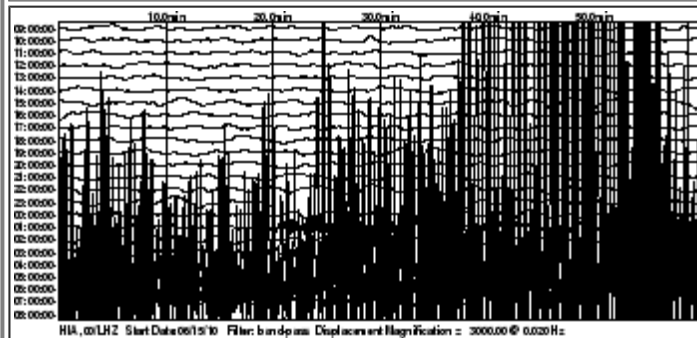
**IC/BJT, Baijiatuan, Beijing, China**



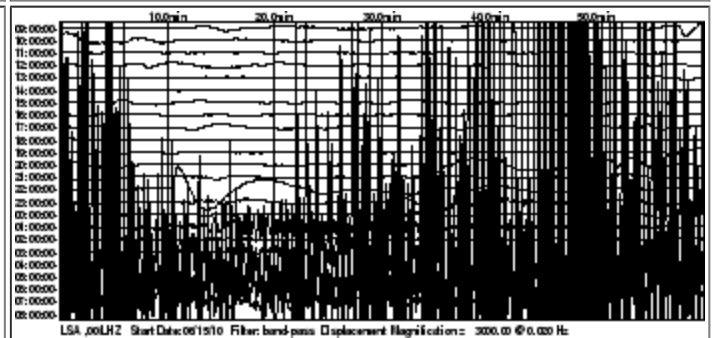
**IC/ENH, Enshi, China**



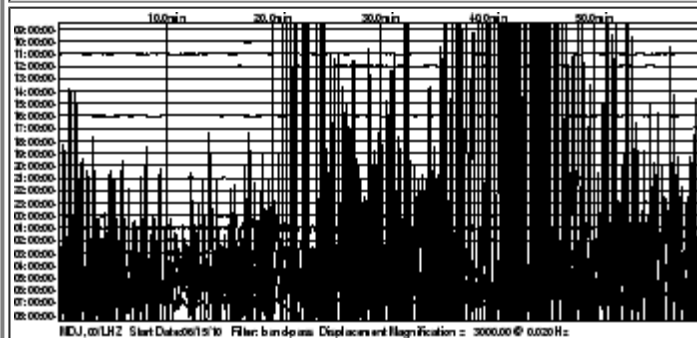
**IC/HIA, Hailar, Neimenggu Province, China**



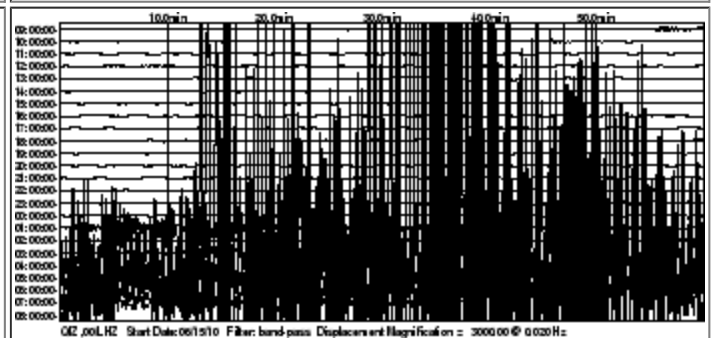
**IC/LSA, Lhasa, China**



**IC/MDJ, Mudanjiang, China**

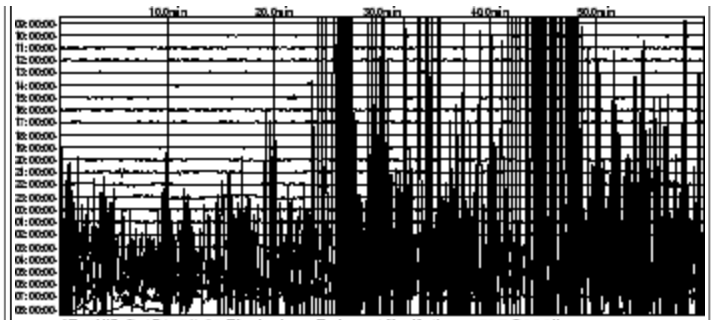
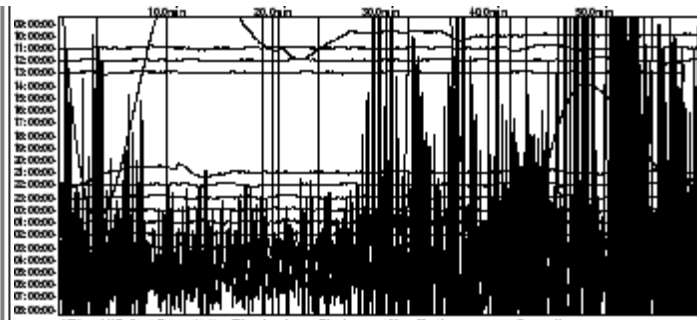


**IC/QIZ, Qiongzong, Guangduong Province, China**

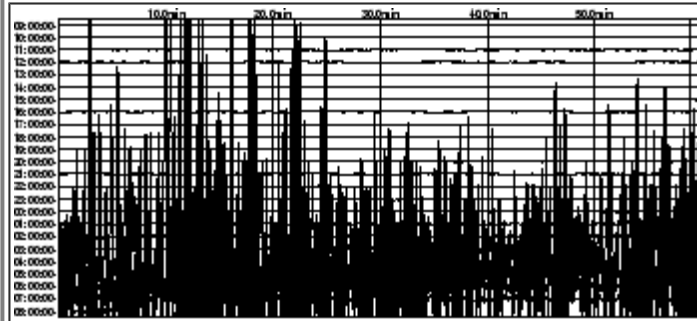


**IU/ADK, Aleutian Islands, Alaska, USA**

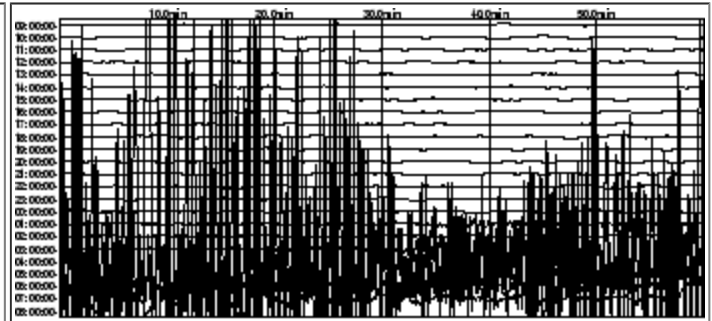
**IU/AFI, Afiamalu, Samoa**



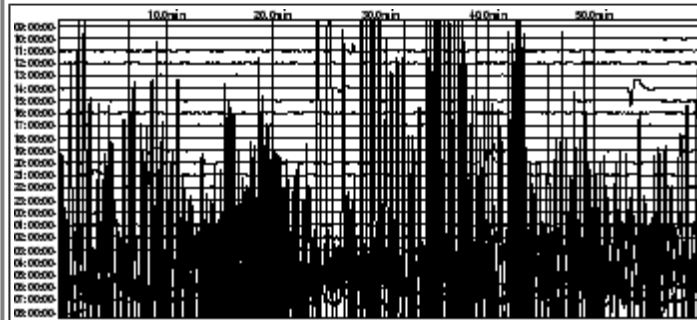
**IU/ANMO, Albuquerque, New Mexico, USA**



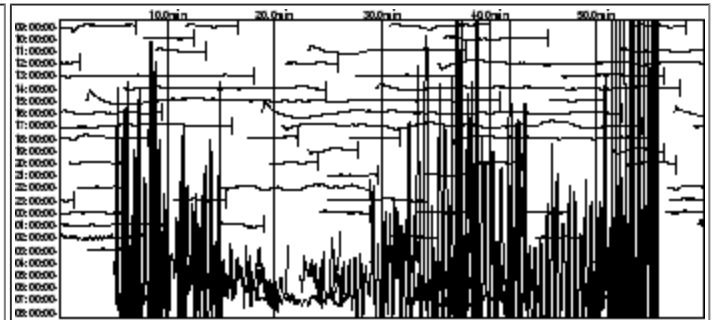
**IU/ANTO, Ankara, Turkey**



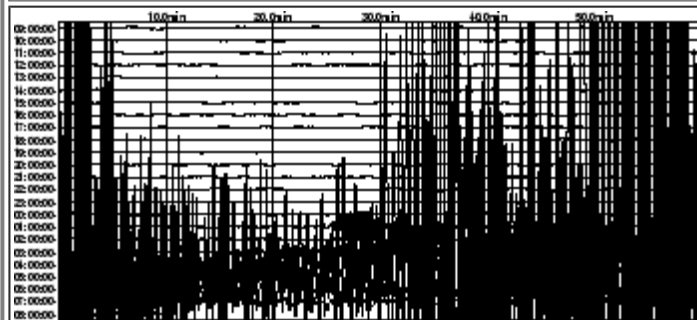
**IU/BBSR, Bermuda**



**IU/BILL, Bilibino, Russia**



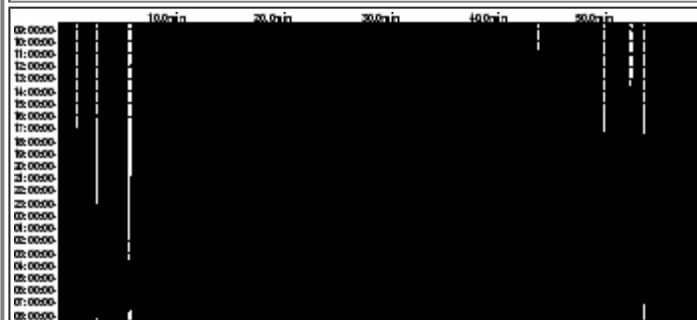
**IU/CASY, Casey, Antarctica**



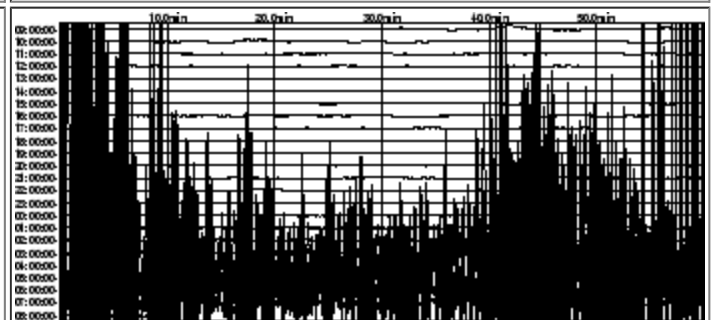
**IU/CCM, Cathedral Cave, Missouri, USA**

SORRY, TELEMETRY DATA ARE PRESENTLY  
UNAVAILABLE FOR THIS STATION

**IU/CHTO, Chiang Mai, Thailand**

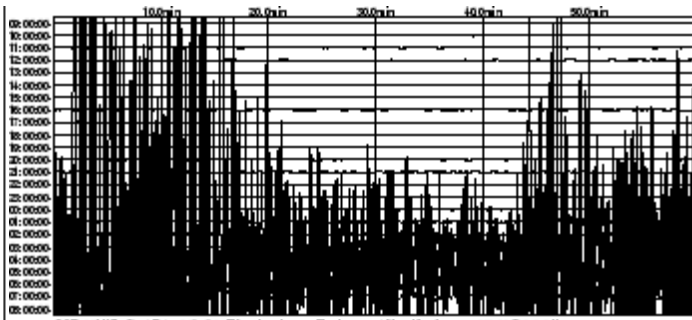


**IU/COLA, College Outpost, Alaska, USA**

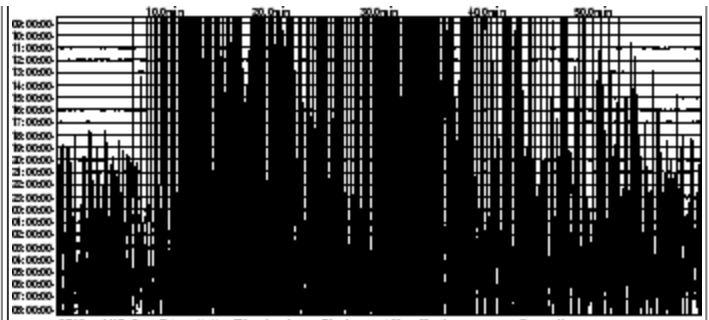


**IU/COR, Corvallis, Oregon, USA**

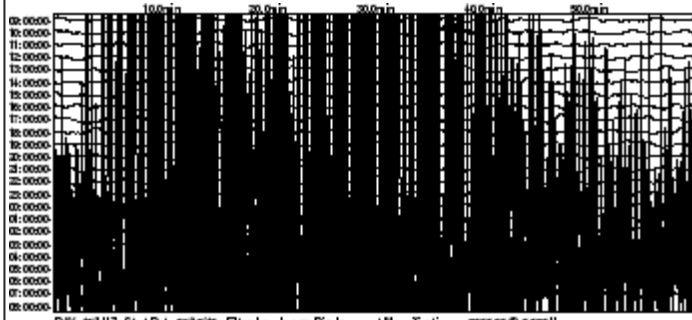
**IU/CTAO, Charters Towers, Australia**



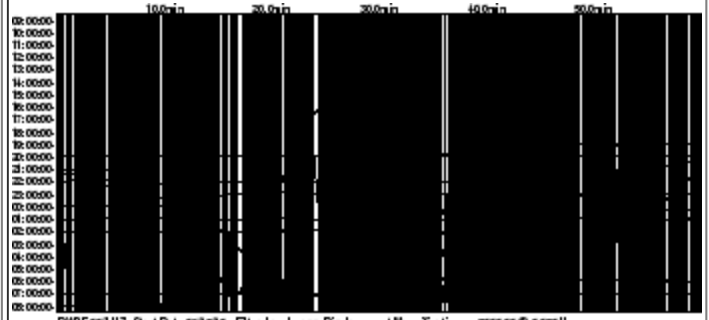
**IU/DAV,Davao, Philippines**



**IU/DWPF,Disney Wilderness Preserve, Florida, USA**

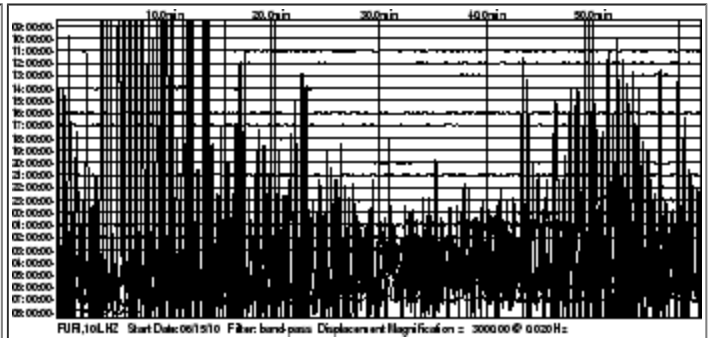


**IU/FUNA,Funafuti, Tuvalu**



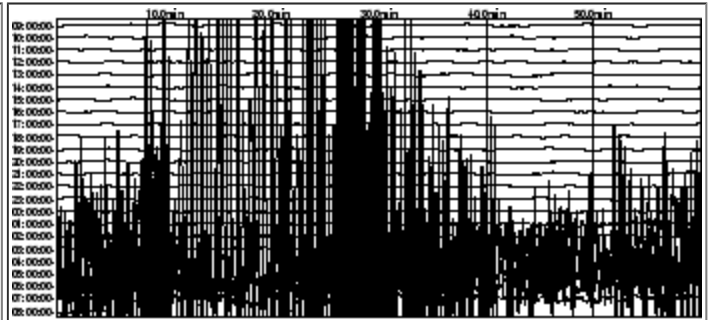
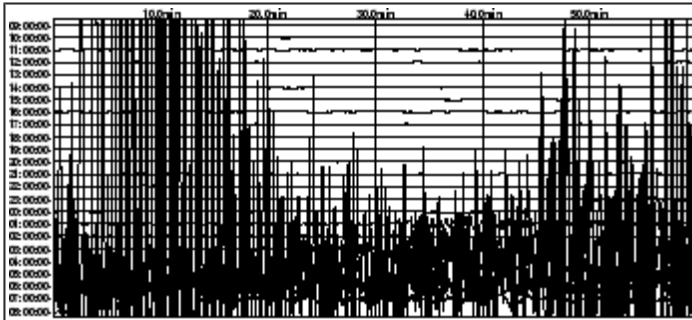
**IU/FURI,Mt. Furi, Ethiopia**

SORRY, TELEMETRY DATA ARE PRESENTLY  
UNAVAILABLE FOR THIS STATION



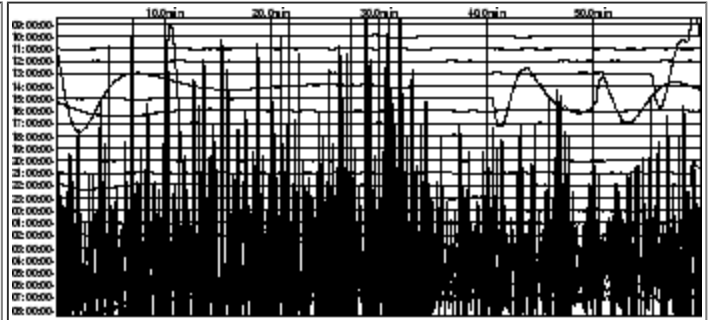
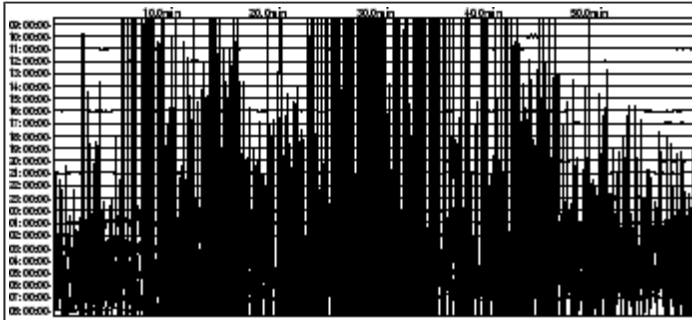
**IU/GNI,Garni, Armenia**

**IU/GRFO,Grafenberg, Germany**



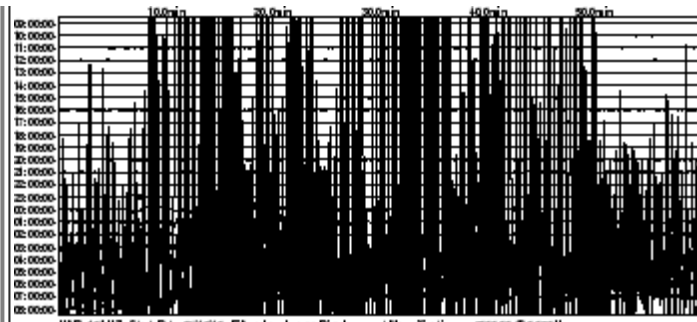
**IU/GUMO,Guam, Mariana Islands**

**IU/HKT,Hockley, Texas, USA**



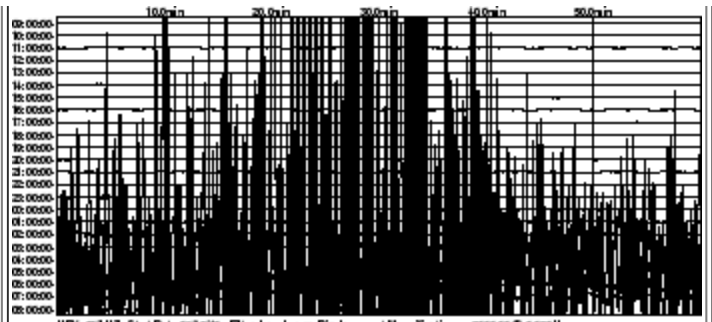
**IU/HNR,Honiara, Solomon Islands**

**IU/HRV,Adam Dziewonski Observatory (Oak Ridge), Massachusetts, USA**



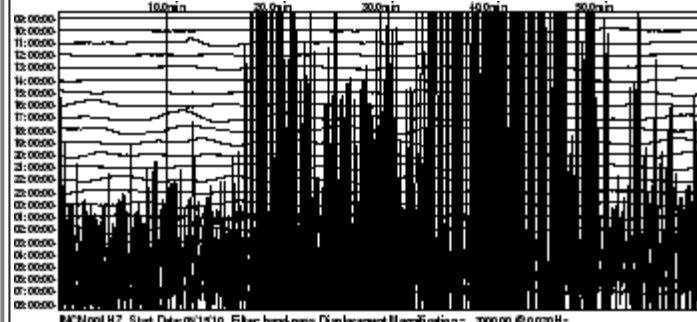
IUI/INCN, Start Date:06/15/10 Filter: band-pass Displacement Magnification: = 3000.00 @ 0.020 Hz

**IU/INCN, Inchon, Republic of Korea**



IUI/JOHN, Start Date:06/15/10 Filter: band-pass Displacement Magnification: = 3000.00 @ 0.020 Hz

**IU/JOHN, Johnston Island, Pacific Ocean**

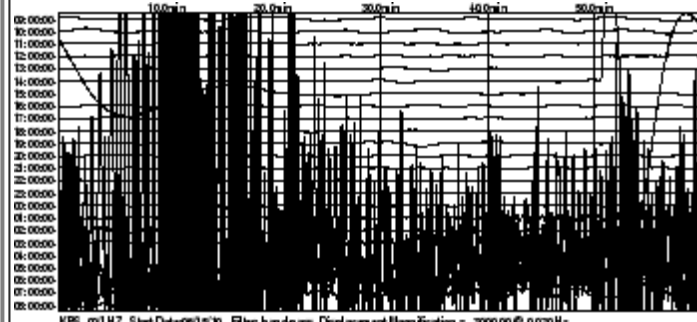


IUI/KBS, Start Date:06/15/10 Filter: band-pass Displacement Magnification: = 3000.00 @ 0.020 Hz

**IU/KBS, Ny-Alesund, Spitzbergen, Norway**

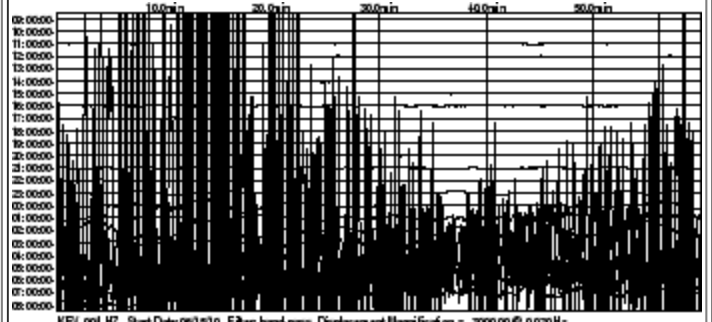
**SORRY, TELEMETRY DATA ARE PRESENTLY UNAVAILABLE FOR THIS STATION**

**IU/KEV, Kevo, Finland**



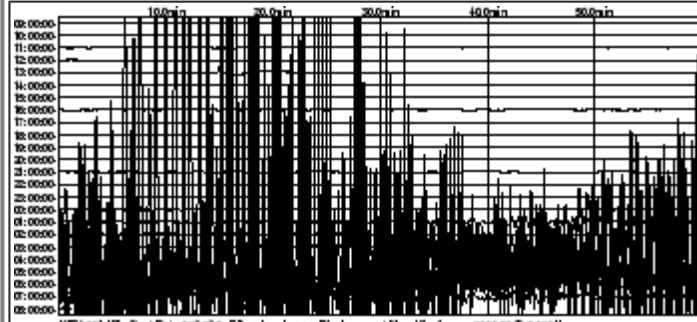
IUI/KIEV, Start Date:06/15/10 Filter: band-pass Displacement Magnification: = 3000.00 @ 0.020 Hz

**IU/KIEV, Kiev, Ukraine**



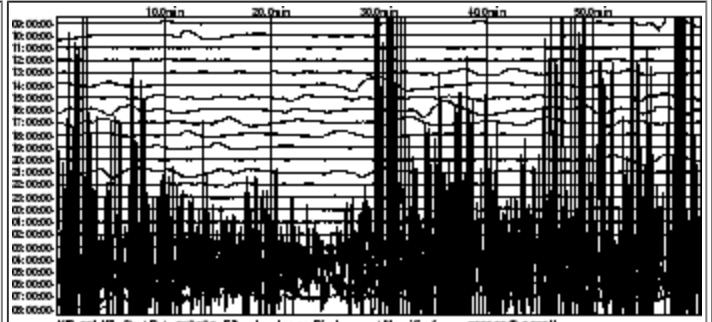
IUI/KIP, Start Date:06/15/10 Filter: band-pass Displacement Magnification: = 3000.00 @ 0.020 Hz

**IU/KIP, Kipapa, Hawaii, USA**



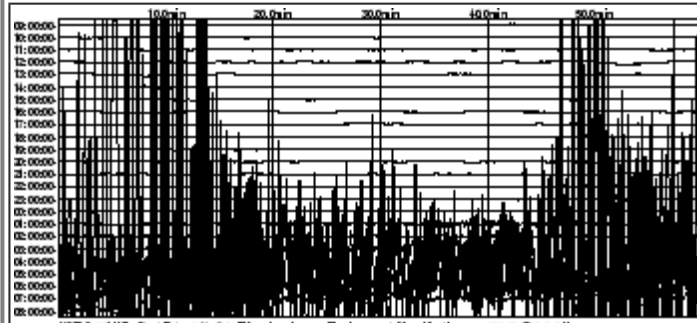
IUI/KMBO, Start Date:06/15/10 Filter: band-pass Displacement Magnification: = 3000.00 @ 0.020 Hz

**IU/KMBO, Kilima Mbogo, Kenya**



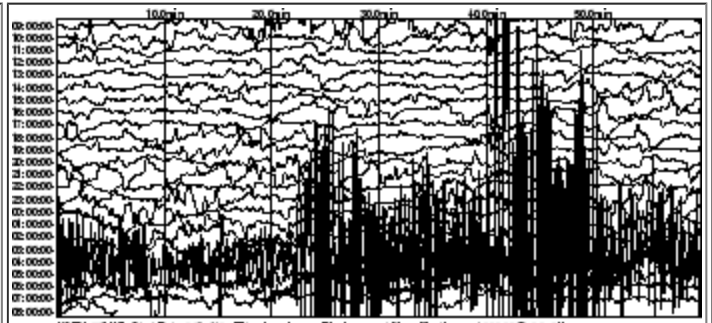
IUI/KNTN, Start Date:06/15/10 Filter: band-pass Displacement Magnification: = 1000.00 @ 0.020 Hz

**IU/KNTN, Kanton Island, Kiribati**



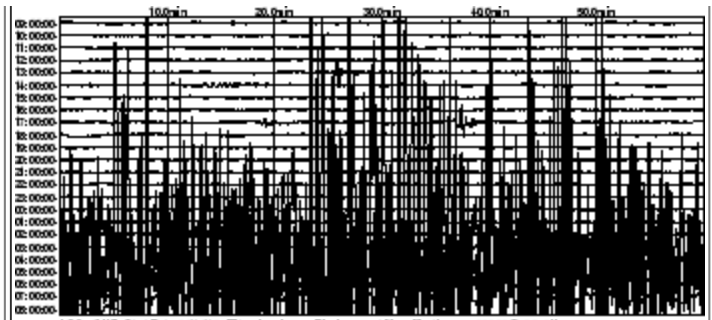
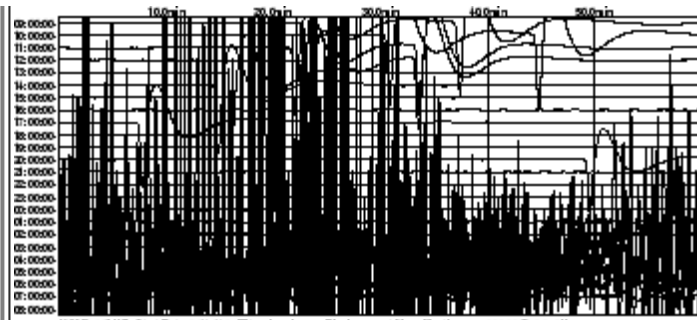
IUI/KONO, Start Date:06/15/10 Filter: band-pass Displacement Magnification: = 3000.00 @ 0.020 Hz

**IU/KONO, Kongsberg, Norway**



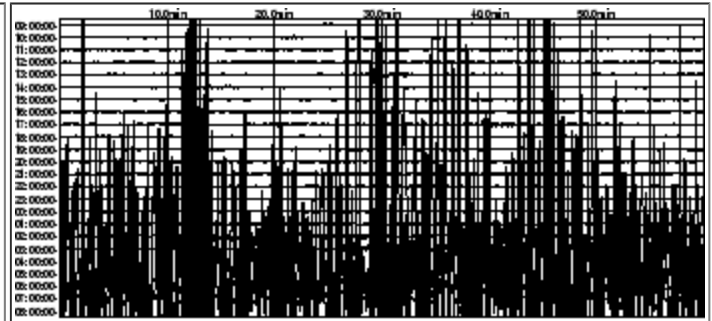
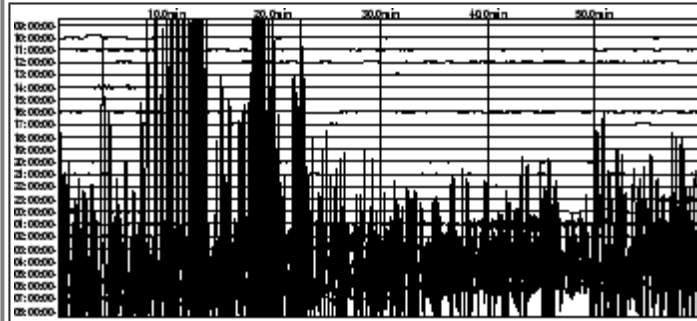
IUI/LCO, Start Date:06/15/10 Filter: band-pass Displacement Magnification: = 1000.00 @ 0.020 Hz

**IU/LCO, Las Campanas Astronomical Observatory, Chile**

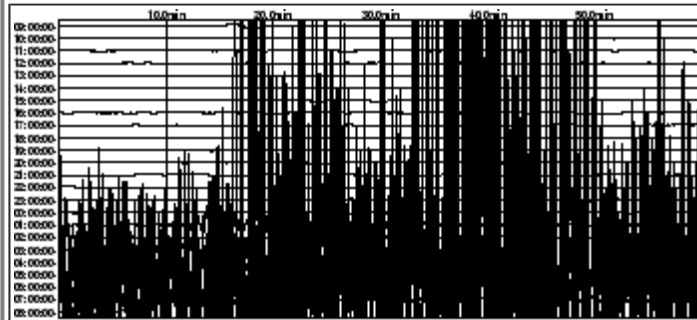


**IU/LSZ, Lusaka, Zambia**

**IU/LVC, Limon Verde, Chile**

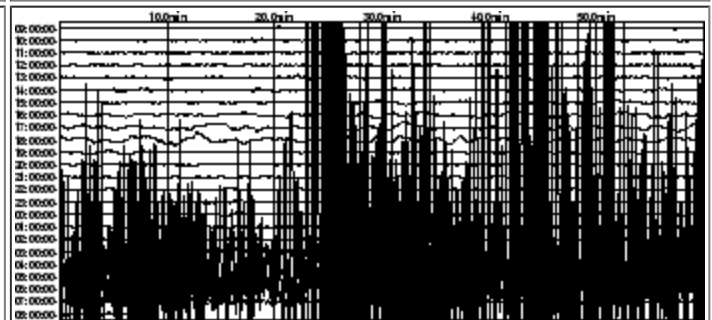
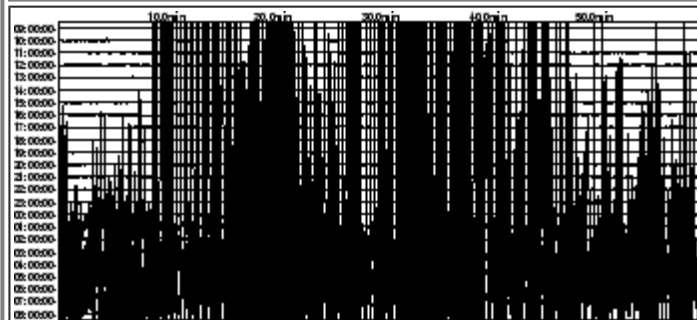


**IU/MAJO, Matsushiro, Japan**



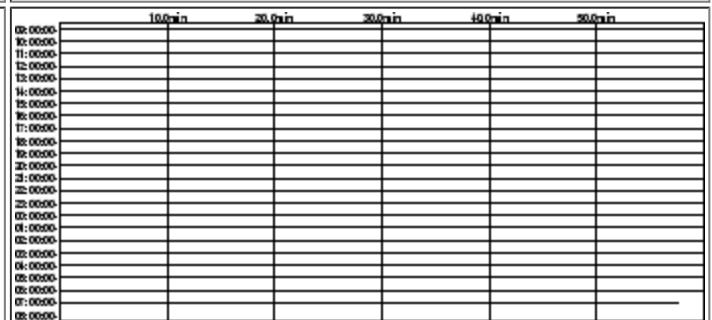
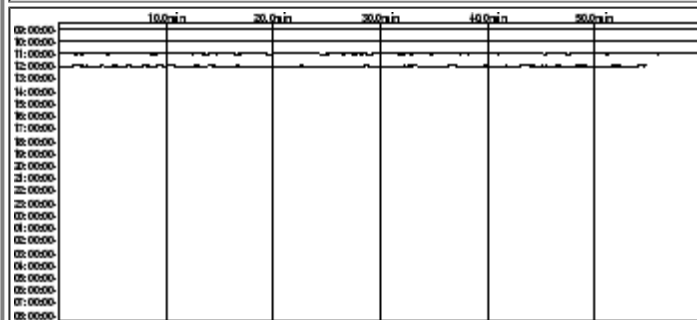
**IU/MBWA, Marble Bar, Western Australia**

**IU/MIDW, Midway Island, Pacific Ocean, USA**



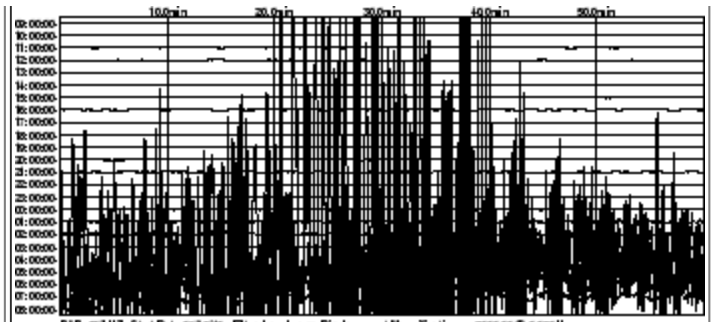
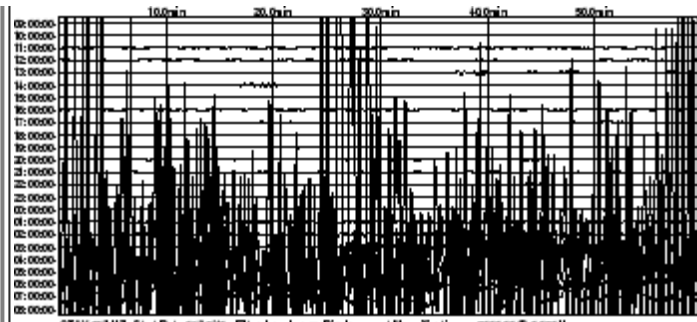
**IU/MSKU, Masuku, Gabon**

**IU/NWAO, Narrogin, Australia**

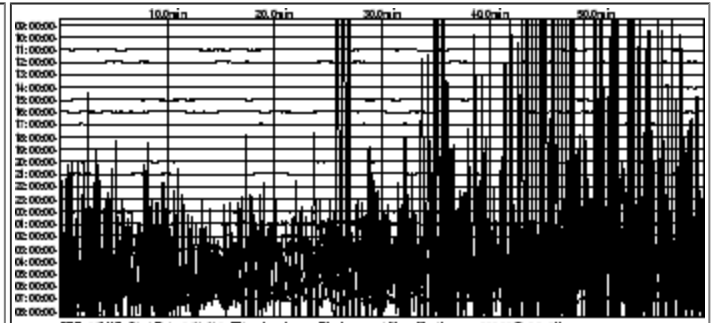
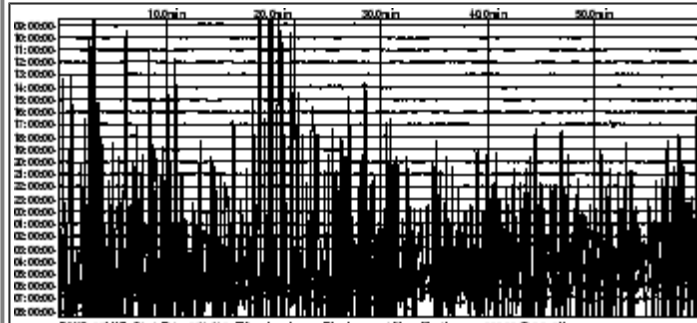


**IU/OTAV, Otavalo, Equador**

**IU/PAB, San Pablo, Spain**

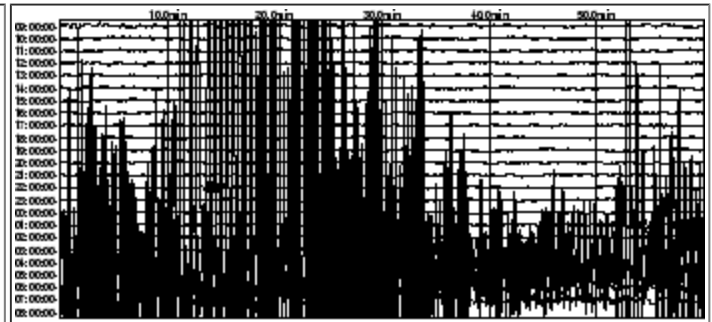
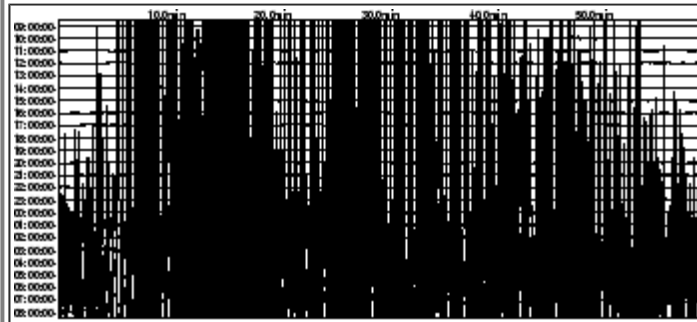


**IU/PAYG Puerto Ayora, Galapagos Islands**



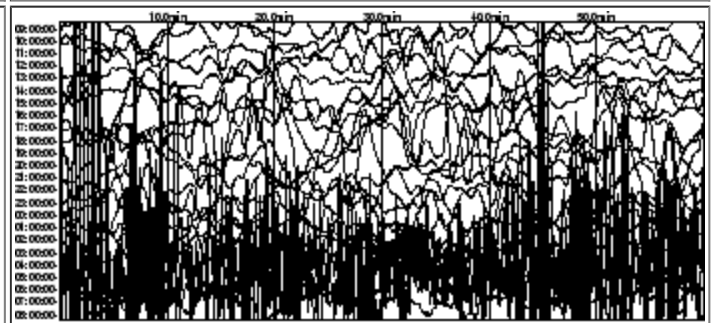
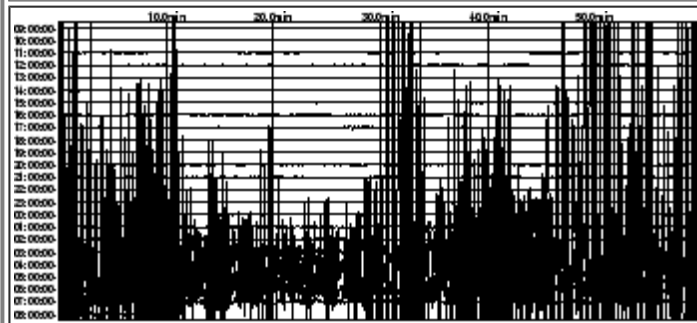
**IU/PET, Petropavlovsk, Russia**

**IU/PMG, Port Moresby, Papua New Guinea**



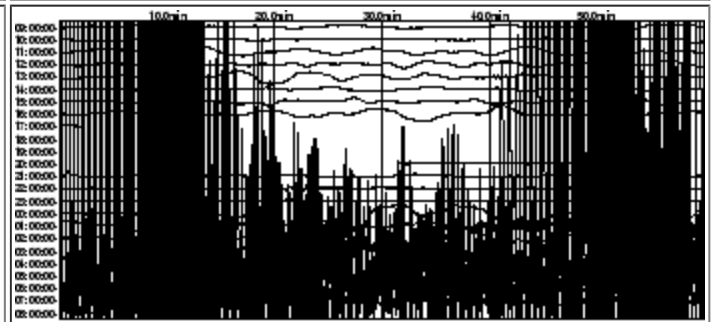
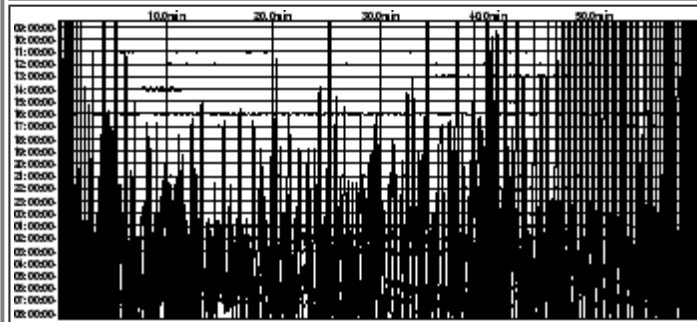
**IU/PMSA, Palmer Station, Antarctica**

**IU/POHA, Pohakaloa, Hawaii**



**IU/PTCN, Pitcairn Island, South Pacific**

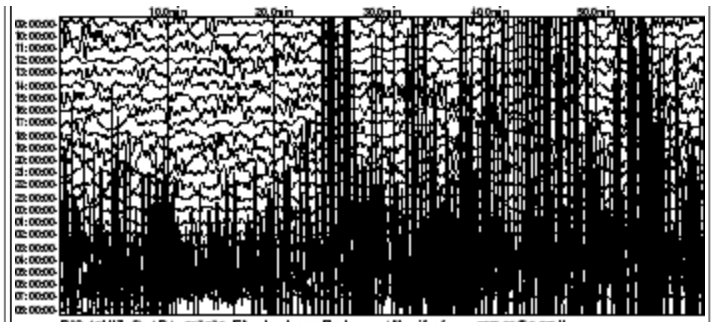
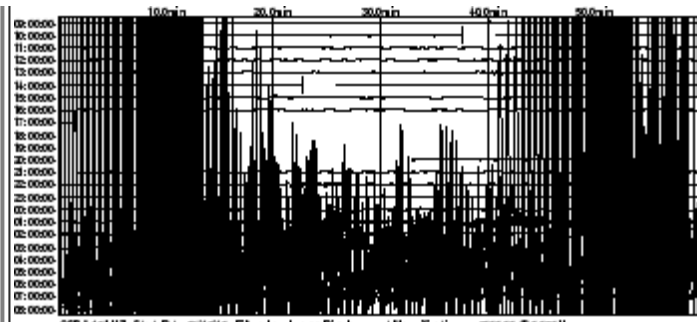
**IU/PTGA, Pitinga, Brazil**



**IU/QSPA, South Pole, Antarctica**

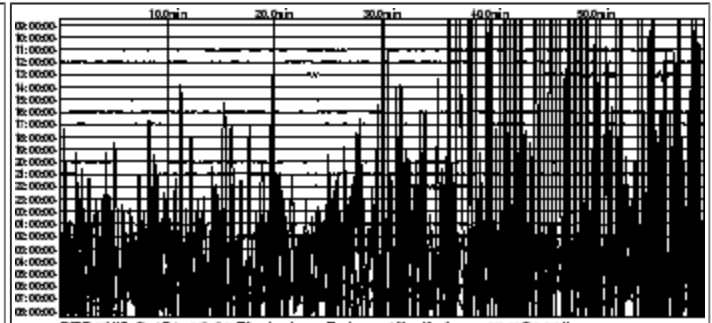
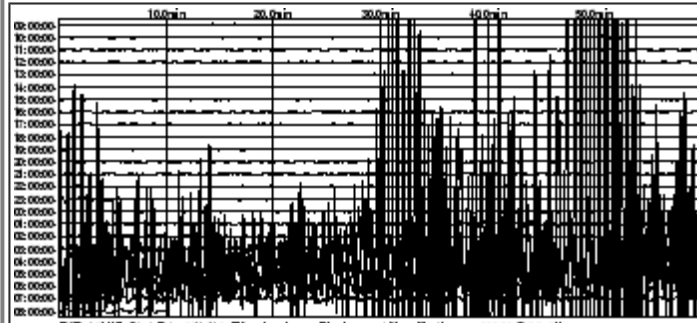
**IU/QSPA, South Pole, Antarctica**

**IU/RAO, Raoul, Kermadec Islands**



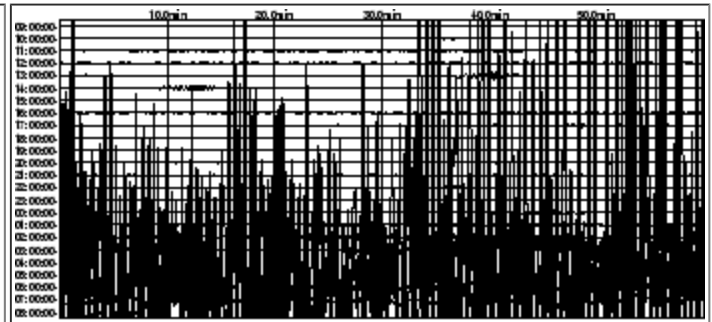
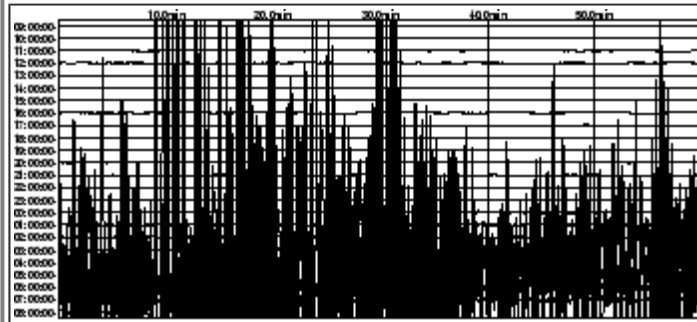
**IU/RAR, Rarotonga, Cook Islands**

**IU/RCBR, Riachuelo, Brazil**



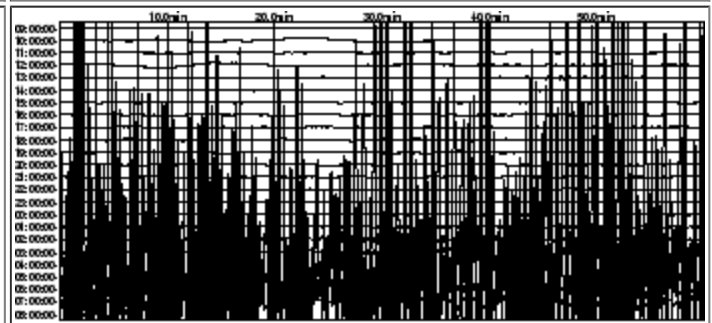
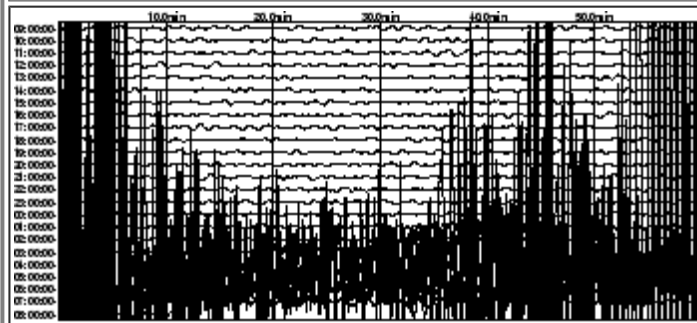
**IU/RSSD, Black Hills, South Dakota, USA**

**IU/SAML, Samuel, Brazil**



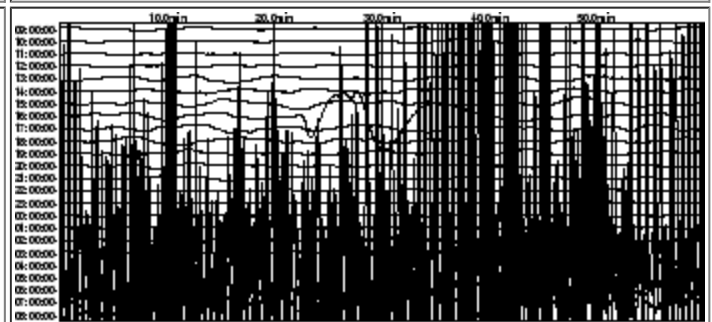
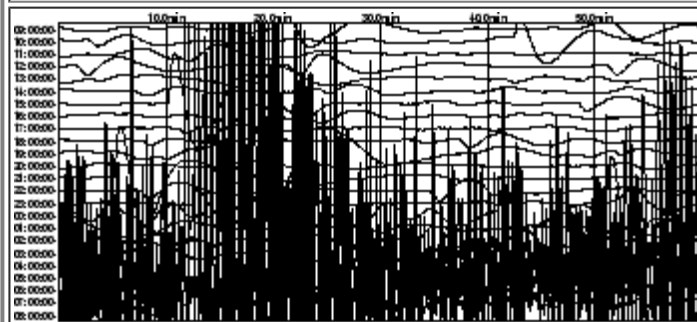
**IU/SBA, Scott Base, Antarctica**

**IU/SDV, Santo Domingo, Venezuela**



**IU/SFJD, Sondre Stromfjord, Greenland**

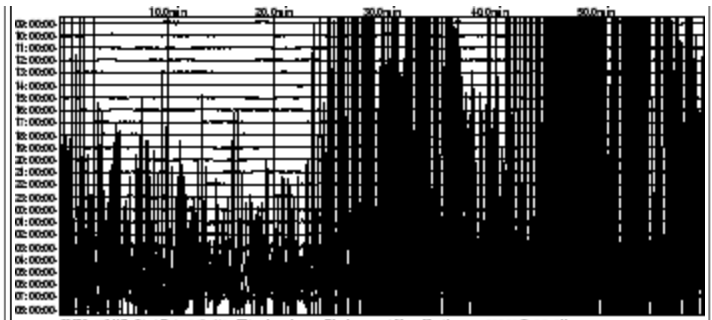
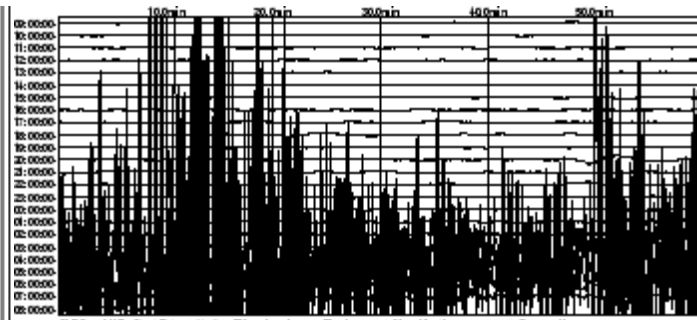
**IU/SJG, San Juan, Puerto Rico**



**IU/SLBS, Sierra la Laguna Baja California Sur, Mexico**

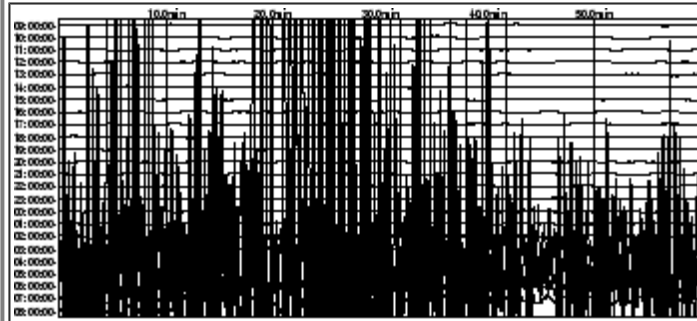
**IU/SNZO, South Karori, New Zealand**





**IU/SSPA, Standing Stone, Pennsylvania USA**

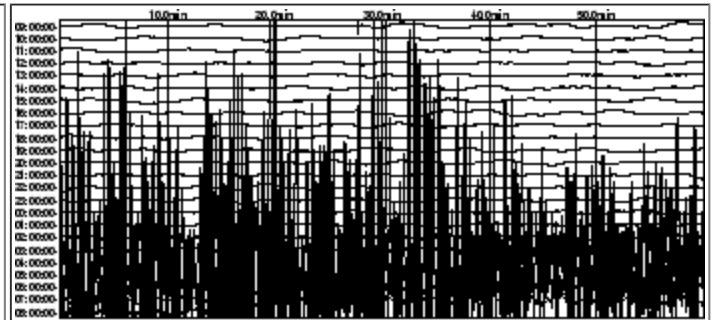
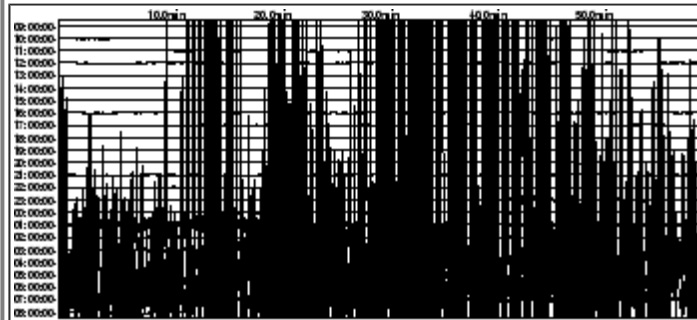
**IU/TARA, Tarawa Island, Republic of Kiribati**



**SORRY, TELEMETRY DATA ARE PRESENTLY UNAVAILABLE FOR THIS STATION**

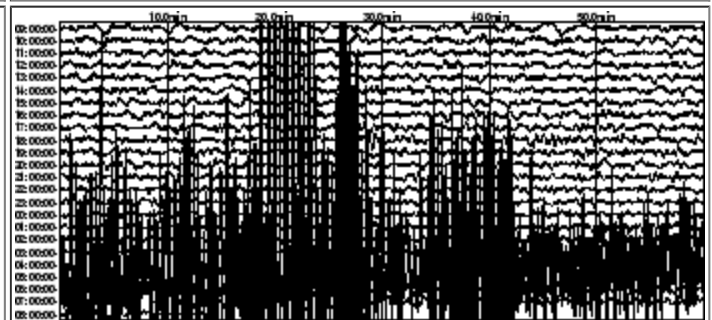
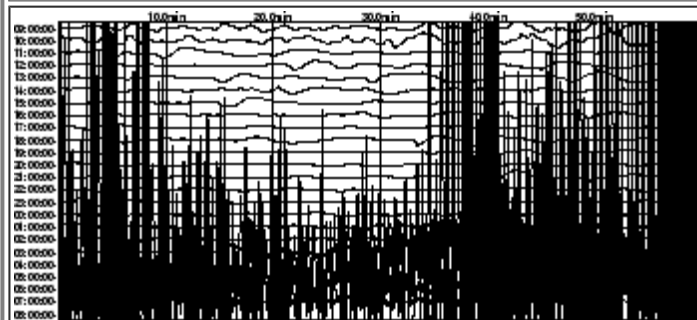
**IU/TATO, Taipei, Taiwan**

**IU/TEIG, Tepich, Yucatan, Mexico**



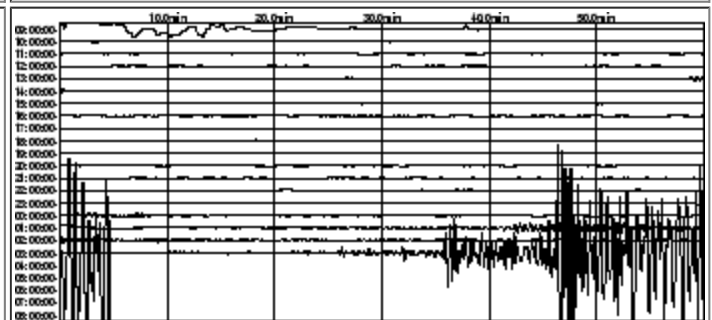
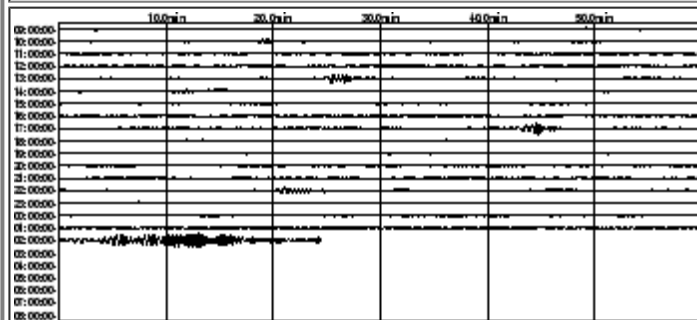
**IU/TIXI, Tiksi, Russia**

**IU/TRIS, Tristan da Cunha, Atlantic Ocean**



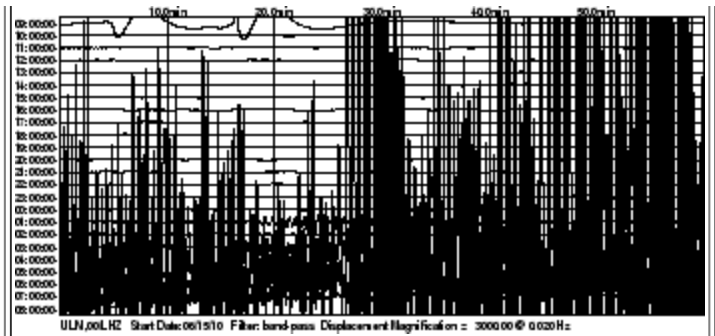
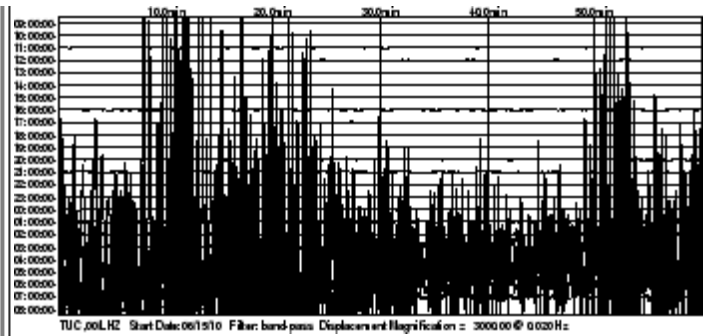
**IU/TRQA, Tornquist, Argentina**

**IU/TSUM, Tsumeb, Namibia**



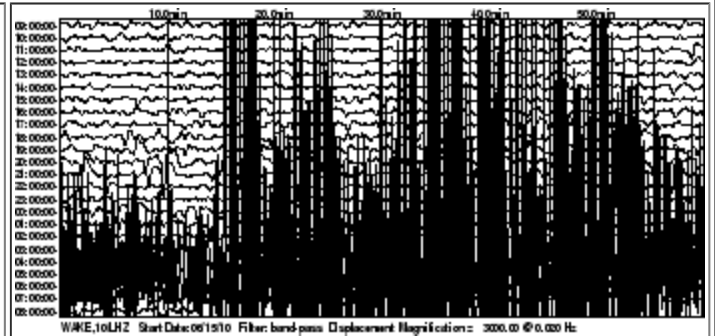
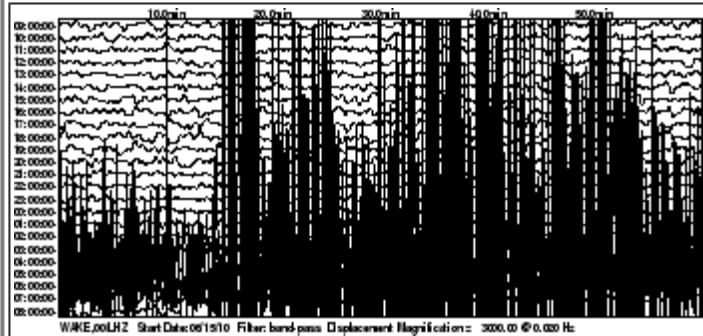
**IU/TUC, Tucson, Arizona**

**IU/ULN, Ulaanbaatar, Mongolia**



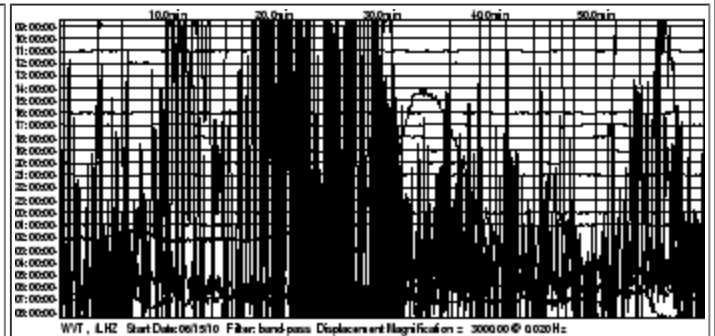
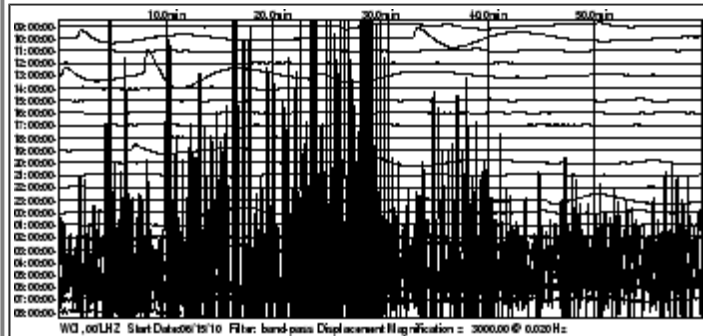
IU/WAKE, Wake Island, Pacific Ocean

IU/WAKE, Wake Island, Pacific Ocean



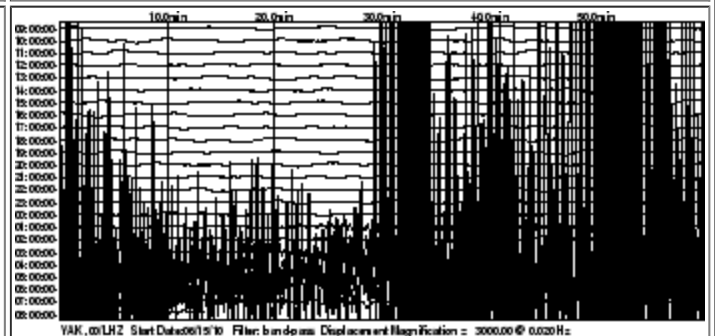
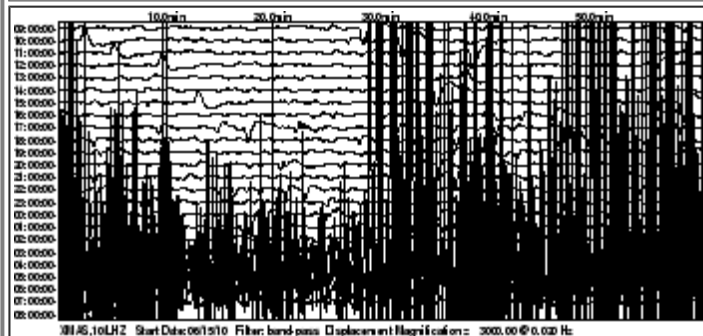
IU/WCI, Wyandotte Cave, Indiana, USA

IU/WVT, Waverly, Tennessee, USA

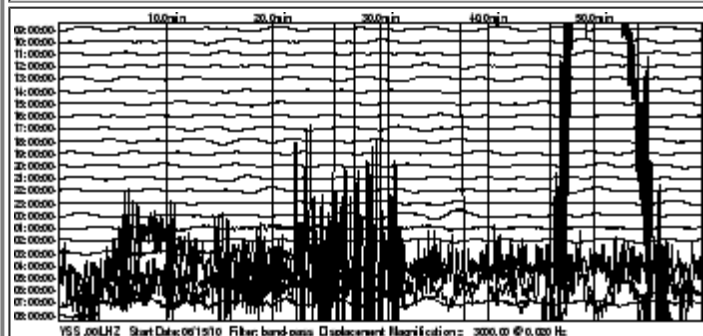


IU/XMAS, Kiritimati Island, Republic of Kiribati

IU/YAK, Yakutsk, Russia



IU/YSS, Yuzhno Sakhalinsk, Russia



*This page is URL: [http://aslwww.cr.usgs.gov/Seismic\\_Data/heli2.shtml/](http://aslwww.cr.usgs.gov/Seismic_Data/heli2.shtml/)*

*Maintained by: [webmaster@usgs.gov](mailto:webmaster@usgs.gov)*

*Last modified on December 09, 2009 (hfb)*